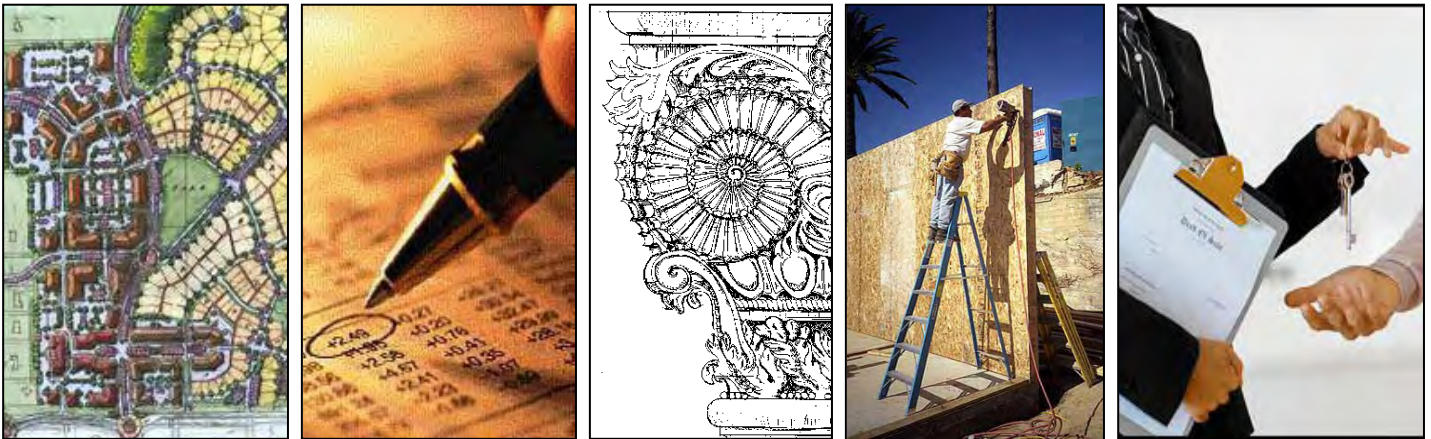




## A word on our Plan Book...

We typically build a “hybrid” home, somewhere between a spec home (in that we’ve got some idea of specific plans and architectural style we want to use on a given project) and a custom home (in that we’ve got plenty of options and upgrades available, and are open to plan changes – even new plans – from our clients). So this Plan Book is really just a starting point, collected from active projects we’ve designed and built, and from our research into the most popular, most affordable, most energy and space efficient plans out there.

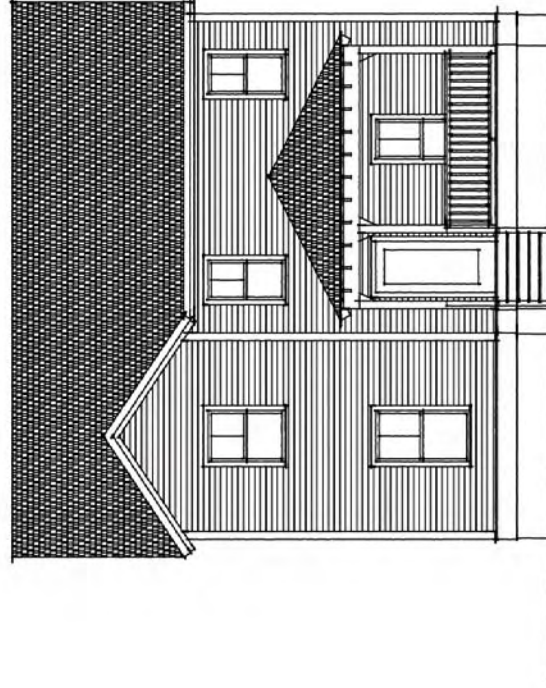
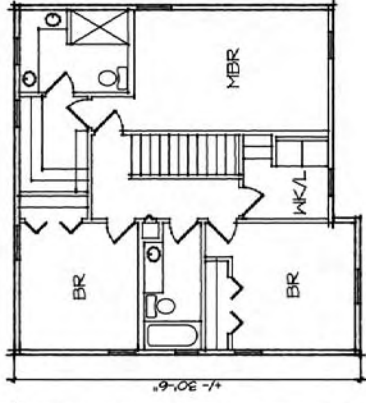
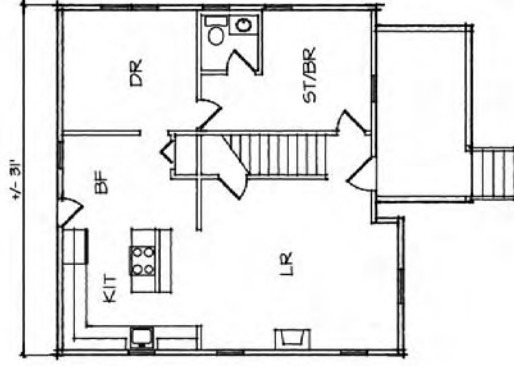


At Verdi, we’re proud of our ability to provide a turn key project, from preliminary development and financing coordination... through design... through construction and real estate closeout. Please look through these plans to see if there’s one you like and through the rest of the web site. If these ideas don’t fit what you’re looking for, try to collect a few ideas of your own, and then feel free to call or email us to talk about how we can build the right home for you.

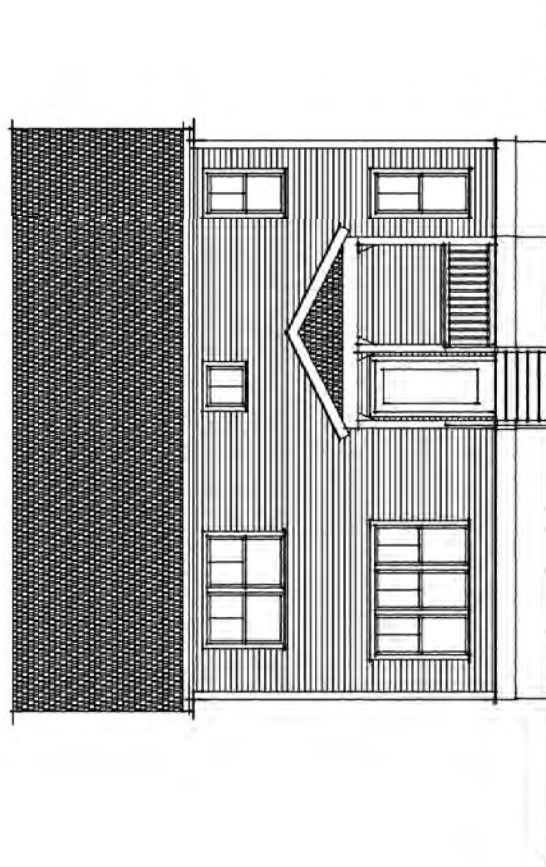
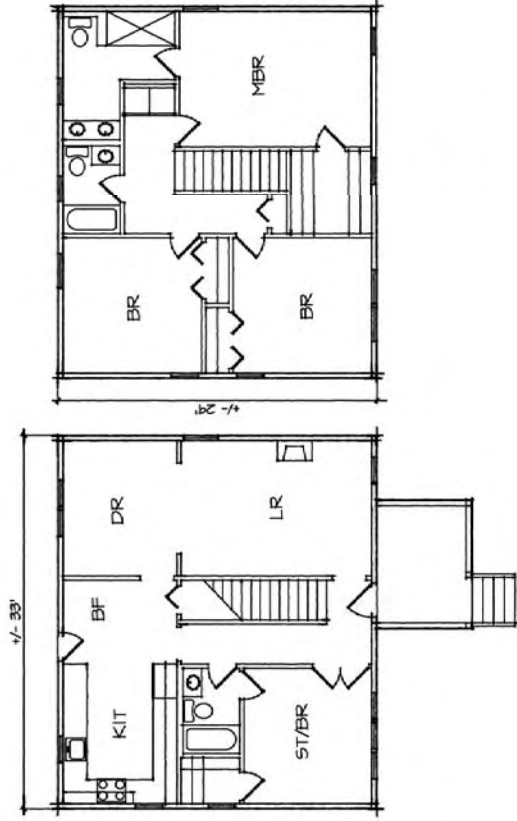
David Hill, AIA LEED NAHB  
Project Design and Development Director

Amy Hill, COO BIC  
President, Verdi Building Systems  
Owner, The Verdi Group



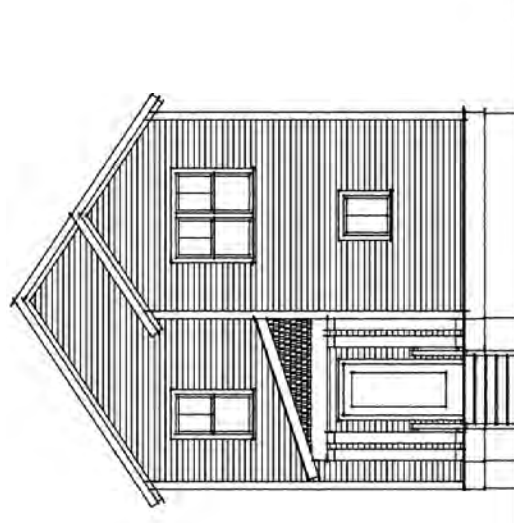
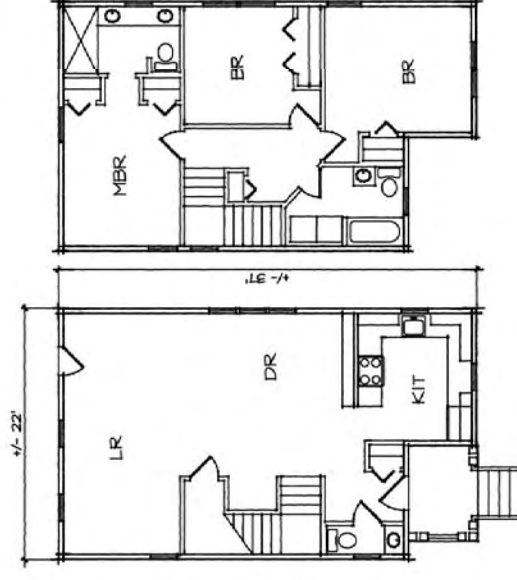


# The Hickory +/- 1794 s.f.



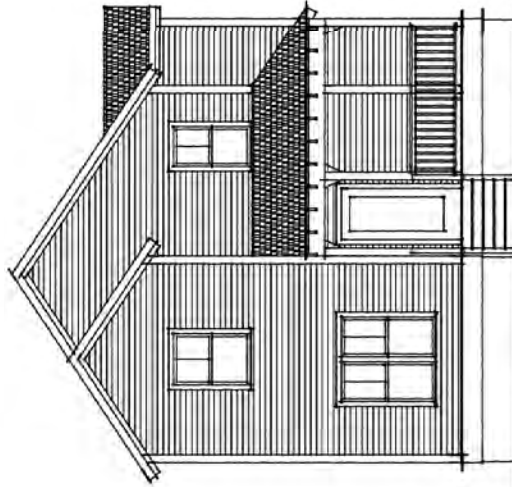
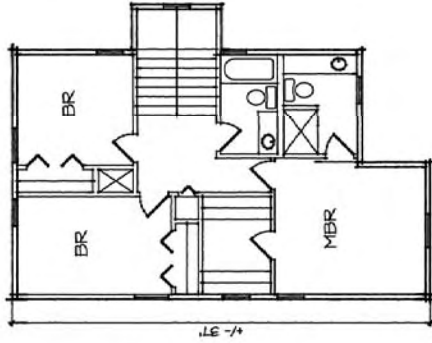
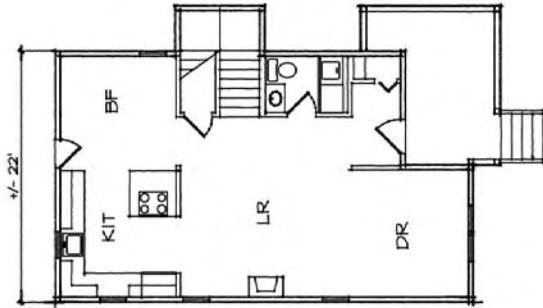
The Dogwood +/- 1849 s.f.

**verdi**  
we know green building  
www.theverdcompany.com



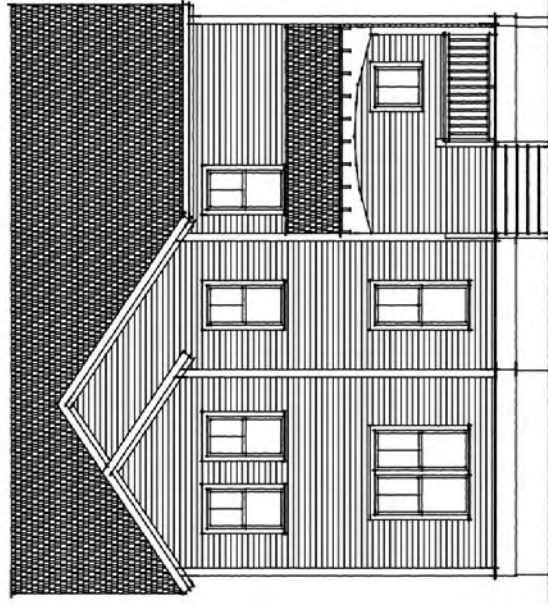
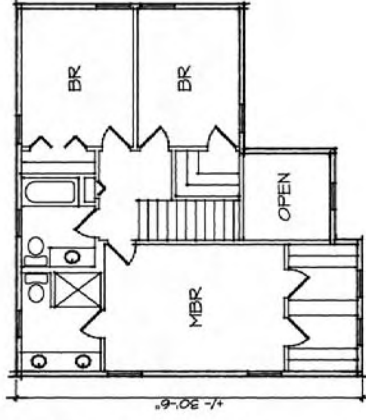
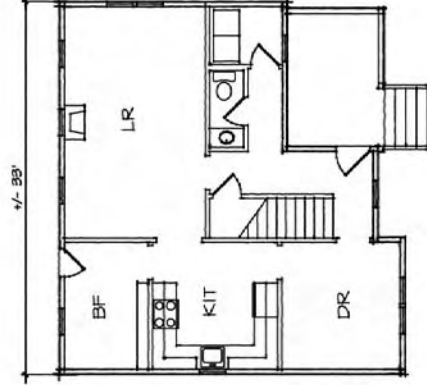
The Chestnut +/- 1512 s.f.

**verdi**  
we know green building  
www.theverdcompany.com



The Beech +/- 1575 s.f.

**verdi**  
we know green building  
www.theverdicompany.com

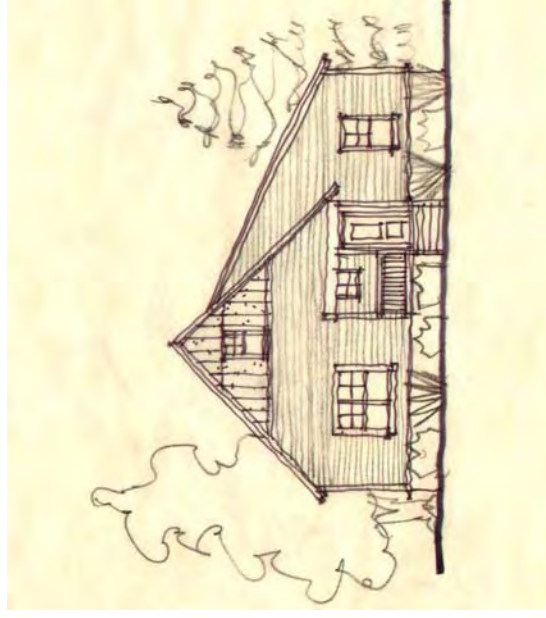


The Redbud +/- 1703 s.f.

**verdi**  
we know green building  
www.theverdicompany.com

# Oak Terrace Preserve

# LOT 89-B



This home features an open one-story plan with spacious rooms and lots of storage.

- 1,456 square feet
- 3 bedrooms, 2 bath

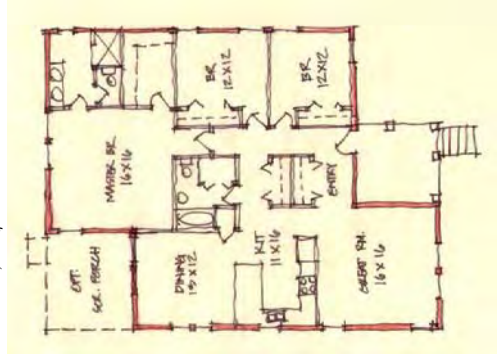
All Verdi homes feature many energy and space-saving ideas, durable exteriors and healthy interior finishes, superior indoor air quality, and careful attention to the site and neighborhood.

For more information on this or other Verdi plans, contact:

Amy Hill  
843.863.9830  
amy@theverdicompany.com

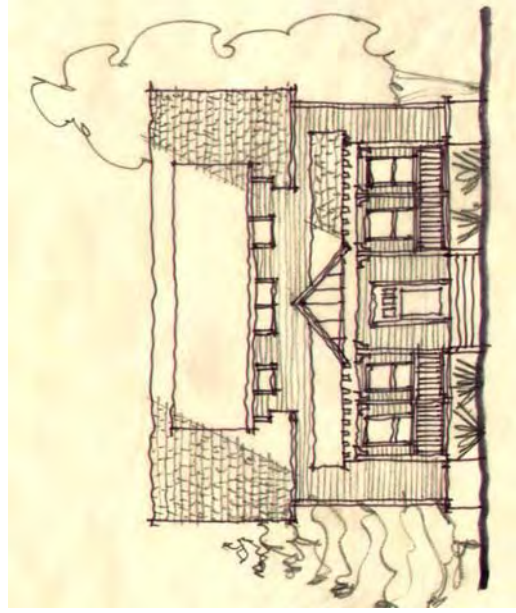


First Floor—1,456 sq. ft.



# Oak Terrace Preserve

## LOT 89-C



This home features an open floor plan ideal for entertaining, and an optional screened porch.

- 1,935 square feet
- 3 bedrooms, 2½ bath

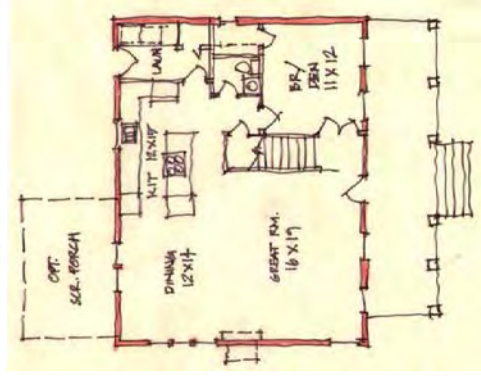
All Verdi homes feature many energy and space-saving ideas, durable exteriors and healthy interior finishes, superior indoor air quality, and careful attention to the site and neighborhood.

For more information on this or other Verdi plans, contact:

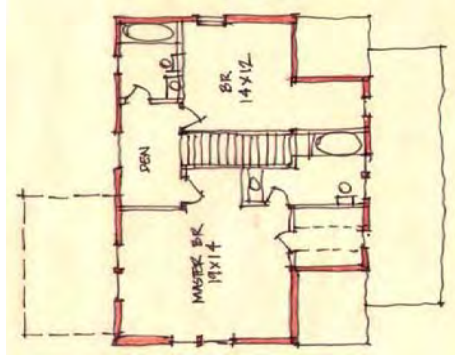
Amy Hill  
843.863.9830  
amy@theverdicompany.com



First Floor—1,008 sq. ft.

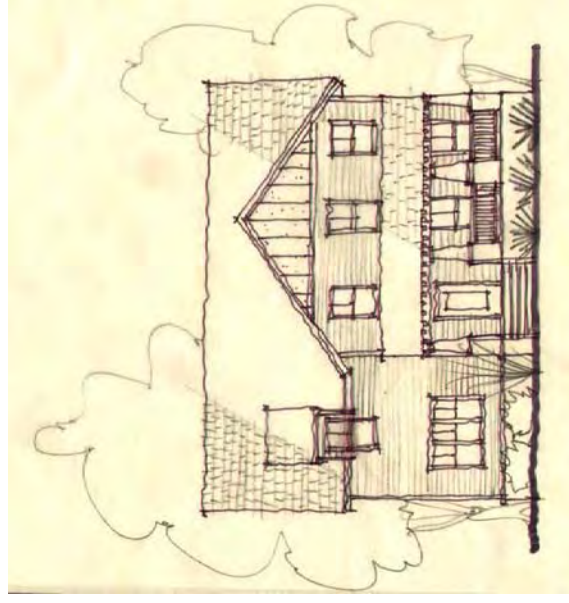


Second Floor—927 sq. ft.



# Oak Terrace Preserve

## LOT 89-D



This home features a fabulous master suite with extra closet space, an open great room & kitchen with butler's pantry.

- 2,500 square feet
- 4 bedrooms, 3½ bath

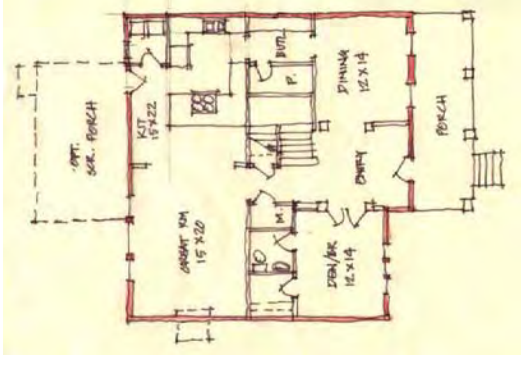
All Verdi homes feature many energy and space-saving ideas, durable exteriors and healthy interior finishes, superior indoor air quality, and careful attention to the site and neighborhood.

For more information on this or other Verdi plans, contact:

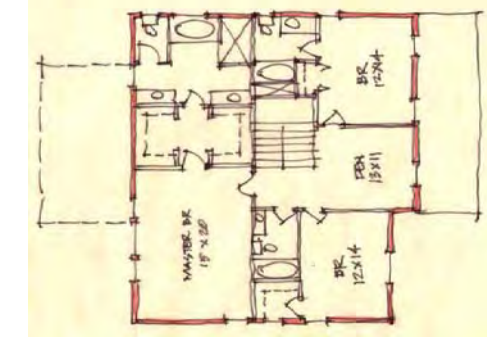
Amy Hill  
843.863.9830  
amy@theverdicompany.com



First Floor—1250 sq. ft.



Second Floor—1250 sq. ft.



# Oak Terrace Preserve

## LOT 90-A



This charming home features a master suite upstairs with an optional screened porch.

- 1,618 square feet
- 3 bedrooms, 2½ bath

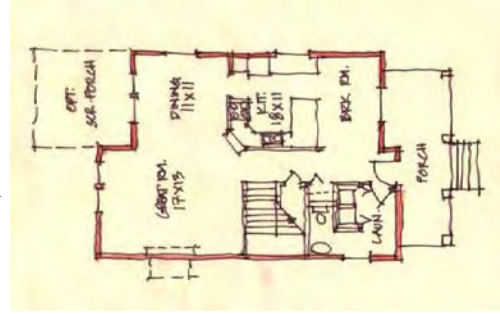
All Verdi homes feature many energy and space-saving ideas, durable exteriors and healthy interior finishes, superior indoor air quality, and careful attention to the site and neighborhood.

For more information on this or other Verdi plans, contact:

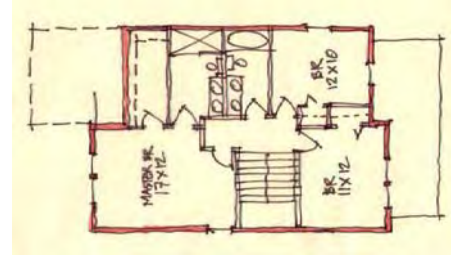
Amy Hill  
843.863.9830  
amy@theverdicompany.com



First Floor—809 sq. ft.

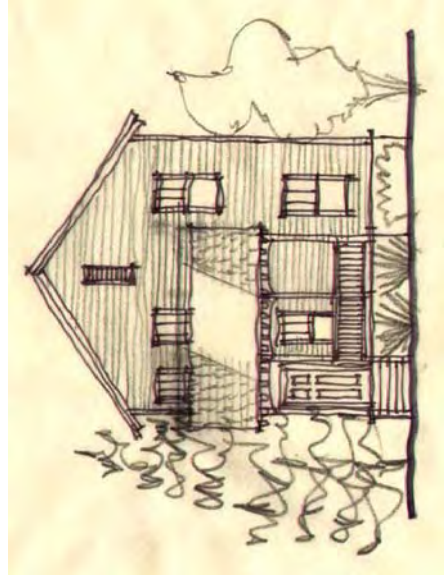


Second Floor—609 sq. ft.



# Oak Terrace Preserve

## LOT 90-B



This unique plan features a huge upstairs Master suite and open, flexible downstairs space.

- square feet
- 4 bedrooms, 3 bath

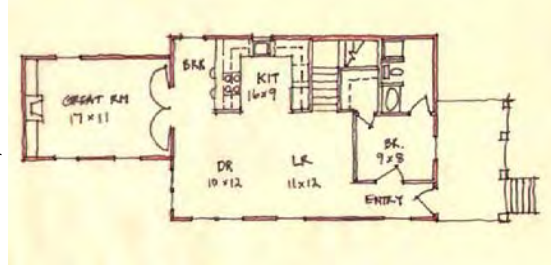
All Verdi homes feature many energy and space-saving ideas, durable exteriors and healthy interior finishes, superior indoor air quality, and careful attention to the site and neighborhood.

For more information on this or other Verdi plans, contact:

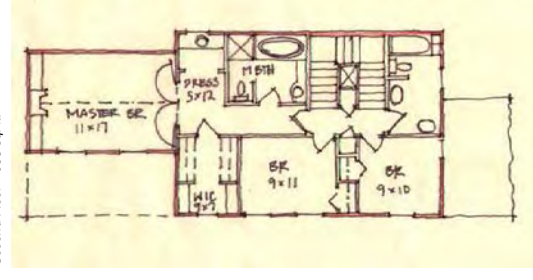
Amy Hill  
843.863.9830  
amy@theverdicompany.com



First Floor—938 sq. ft.

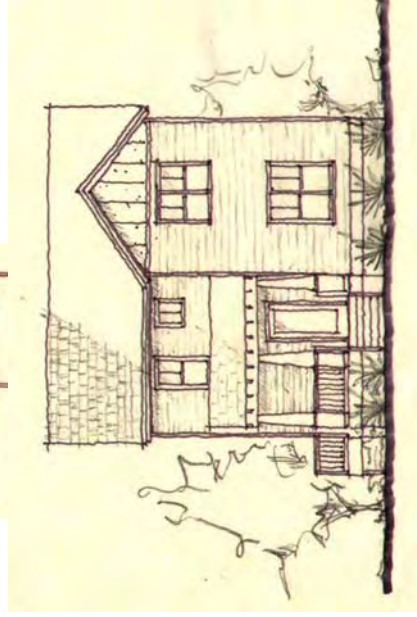


Second Floor—938 sq. ft.



# Oak Terrace

# LOT 90-C



This home is a classic with great flowing spaces and optional screened porch.

- 1,590 square feet
- 3 bedrooms, 2½ bath

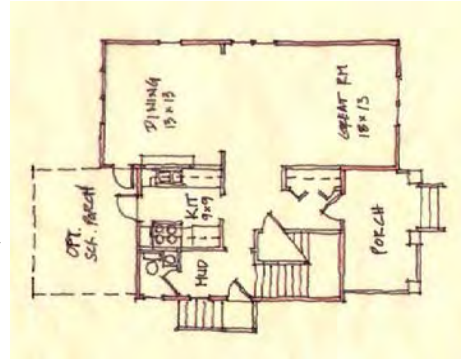
All Verdi homes feature many energy and space-saving ideas, durable exteriors and healthy interior finishes, superior indoor air quality, and careful attention to the site and neighborhood.

For more information on this or other Verdi plans, contact:

Amy Hill  
843.863.9830  
amy@theverdicompany.com



First Floor—795 sq. ft.



Second Floor—795 sq. ft.

